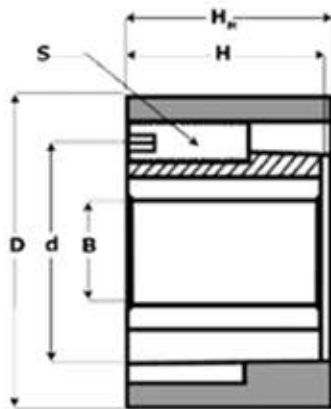




**Manufacturers of Power Transmission
and Motion Control Components**

Precise. Reliable. Trusted



CMT Part Number
(Example Nomenclature)

12 16 x 6mm

Bore Size 6mm

Length Thru Bore 16mm

Max Bore 12mm (Nominal)

Concentric Maxi Torque Stock Sizes and Dimensions

CMT Part Number	Dimensions					Set Screw			Torque
	B	d	H	H _m	D*	S	S _i	M _s	M _t **
0606	2-6 / .125-.250	.359"	.250"	.265"	.551"	M2.5	1.3	7.5	14-33
0609	3-6 / .125-.250	.392"	.375"	.395"	.591"	M3	1.5	9	16-37
0909	4-9 / .156-.375	.536"	.375"	.395"	.752"	M3	1.5	9	25-65
0912	5-9 / .156-.375	.563"	.500"	.530"	.822"	M4	2	19	64-117
1212	6-12 / .250-.500	.688"	.500"	.530"	.975"	M4	2	19	79-138
1216	6-12 / .250-.500	.745"	.625"	.655"	1.054"	M5	2.5	42	138-345
1616	8-16 / .3125-.625	.857"	.625"	.655"	1.170"	M5	2.5	42	168-436
1620	8-16 / .3125-.625	.900"	.787"	.827"	1.240"	M6	3	68	389-875
2020	10-20 / .4375-.750	1.057"	.787"	.827"	1.417"	M6	3	68	531-1100
2025	10-20 / .4375-.750	1.140"	.984"	1.034"	1.590"	M6	3	68	538-1120
2530	12-25 / .500-1.000	1.355"	1.181"	1.241"	1.900"	M8	4	158	1115-2347
3036	16-30 / .625-1.1875	1.575"	1.417"	1.496"	2.200"	M8	4	158	1512-2795

B - Bore Range (Metric/Inches)
d - Bushing Diameter (Inches)
H - Bushing Length (Inches)
D - Minimum Hub Diameter (Inches)
HM- Hub Minimum Length (Inches)
S - Screw Size (Metric)
SI- Hex Key Size (Metric)
MS- Required Torque Set Screw (in-lbs)
MT- Slippage Torque Range (in-lbs)

Shaft size to be (h6) or Nominal Diameter +.0000-.0005

* Minimum hub diameter is based on a material with a yield strength of 276 Mpa (40,000 PSI)

** Slippage torques are as modeled and do not include safety factors. Actual transmissible torque will vary per shaft size & Service Factors - SEE CHARTS

Custom Machine & Tool Co., Inc.
301 Winter Street
Hanover, MA 02339

800-355-5949 - info@cmtco.com - www.cmtco.com